

These music symbols are technically not explained on the Anybody Can Play Piano app.

However, since young children learn encyclopedic information at a young age, learning the definitions of these symbols is something the children enjoy even if they are not directly dealing with music theory in their beginning stages of learning to play songs on the piano.

You can show them pieces of actual piano music and let them find symbols they recognize and define. This excites them! And.....adults are really impressed when children can define a music symbol....something else the children love!

Anybody Can Play PIANO

MUSIC FLASHCARDS are quite self explanatory.
These flashcards are two sided so when you hold them up in front of the children you are able to know what is on the other side.

If you do not have a printer that prints two-sided, I have printed out the back-side info so you can just glue it on the back of the flashcard before you laminate the card.

If you laminate with a strong laminate (like "10") these will be strong enough for the children to play independently with them.

If you start with only one or two flashcards, punch a hole (or 2) in them and put them on a split keyring. Keep adding more cards to the ring as you introduce them to the children. The children take great pride in being able to explain these cards to others - especially adults!

I am a Bass Clef. I have another name:
F Clef.



When you see me in music
it means that you sing or
play low sounds.

I am a Treble Clef. I also have another
name: G Clef.



When you see me in music
it means that you
sing high notes, or
play high notes.

I am an Eighth Note. When you see me in
music you get to "run, run, run, run..." with
the sounds!



I have a notehead, a stem,
and a cute flag!

I can also be right
aside up or upside down.

When I am upside down, I fold my flag up.

I am called a Quarter Note.
When you see me you just
walk, walk, walk through
the sounds.



That squished round part of me is called
a "note head". It really looks like a foot! -
except when I am upside down. And, I
can be upside down some of the time, but
most of the time you will probably see me
with my notehead at the bottom.

That long line is called a "stem". Just think
of a flower and you will remember the name.

I am a Whole Note. I am the only
note that has only a notehead. I
don't have a stem.



When you see me you take a step, then
stop for a little bit before taking the
next step. When you see me you
REALLY go slowly! Step, stop, step, stop,
step, stop through the sounds.

I am a Half Note. I have a notehead and a stem. My notehead has a space that is not colored in the middle though. I have an empty notehead!



When you see me you walk slowly.... waaalllk, waaalllk, waaalllk... through the sounds. Walking slowly is called strolling, so when you see me you stroooll, stroooll, stroooll.....

I am called a Sharp. When you see me you move to the right ONE key on a piano, or if you are singing you move your voice up just a little bit.



I kind of look like a ladder so you can remember to go up in your sound. Remember, "up" on a piano keyboard means to go to the right.

I am a Quarter Rest. When you see me you "Shhhh". You don't make a sound.



I am called a Flat. When you see me in music you go down one key if you are playing the piano, or make your voice go down just a little bit if you are singing.



To help you remember, I am pointing down. And as a reminder, "down" on the piano means going toward the left.



I am a Treble Clef. I also have another name: G Clef.

When you see me in music it means that you sing high notes, or play high notes.

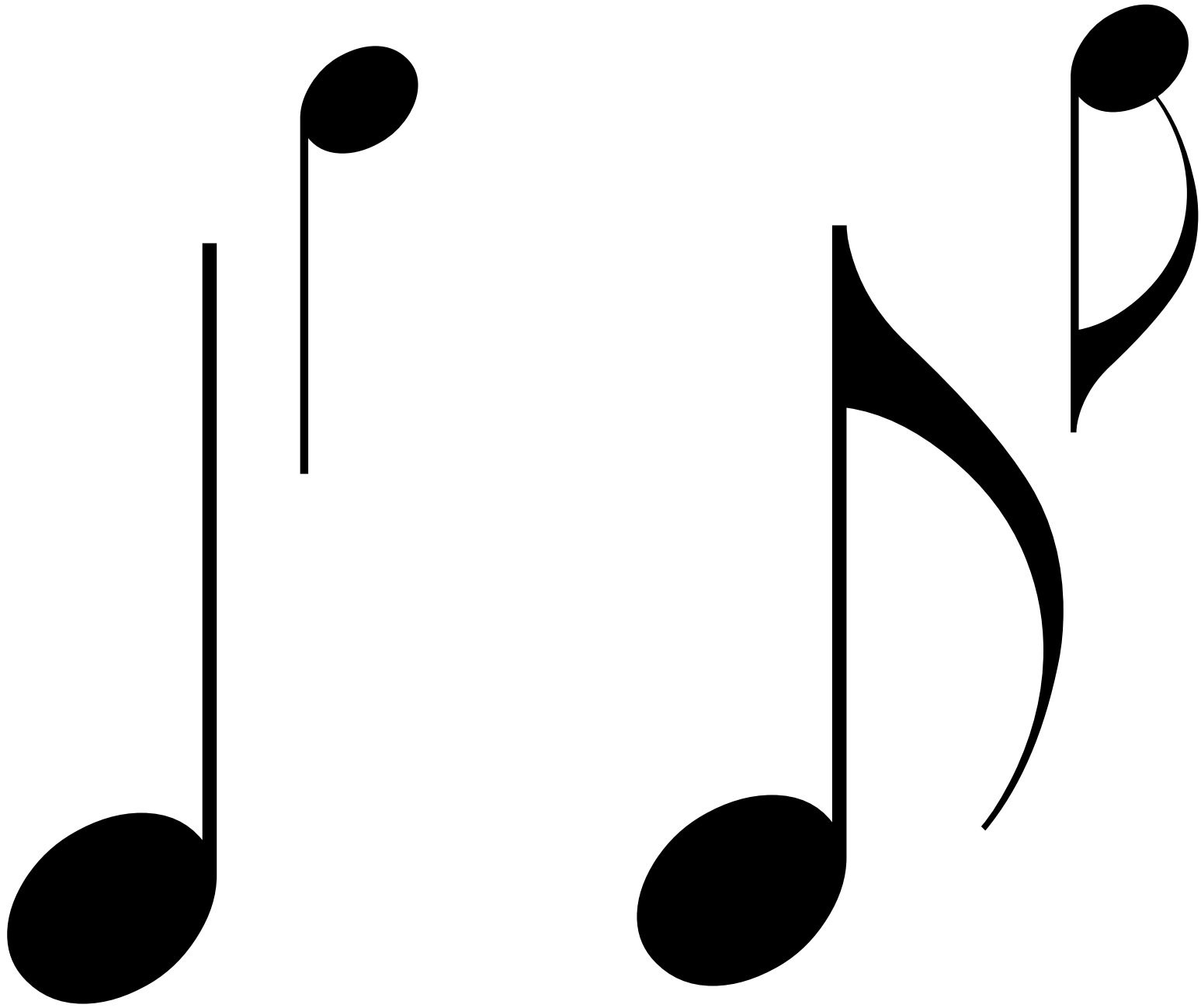


I am a Bass Clef. I have another name: F Clef.



When you see me in music it means that you sing or play low sounds.





I am an Eighth Note. When you see me in music you get to "run, run, run, run..." with the sounds!



I have a notehood, a stem, and a cute flag! I can also be right

aside up or upside down.

When I am upside down, I fold my flag up.

I am called a Quarter Note. When you see me you just walk, walk, walk through the sounds.



That squished round part of me is called a "note head". It really looks like a foot! -

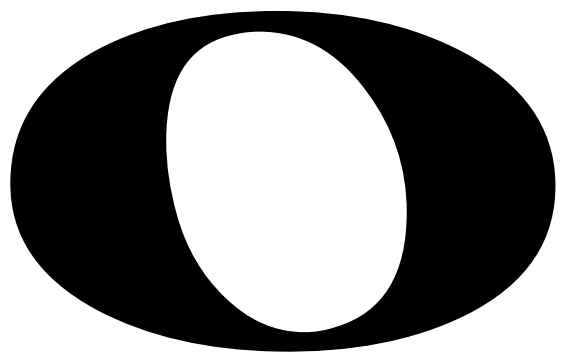
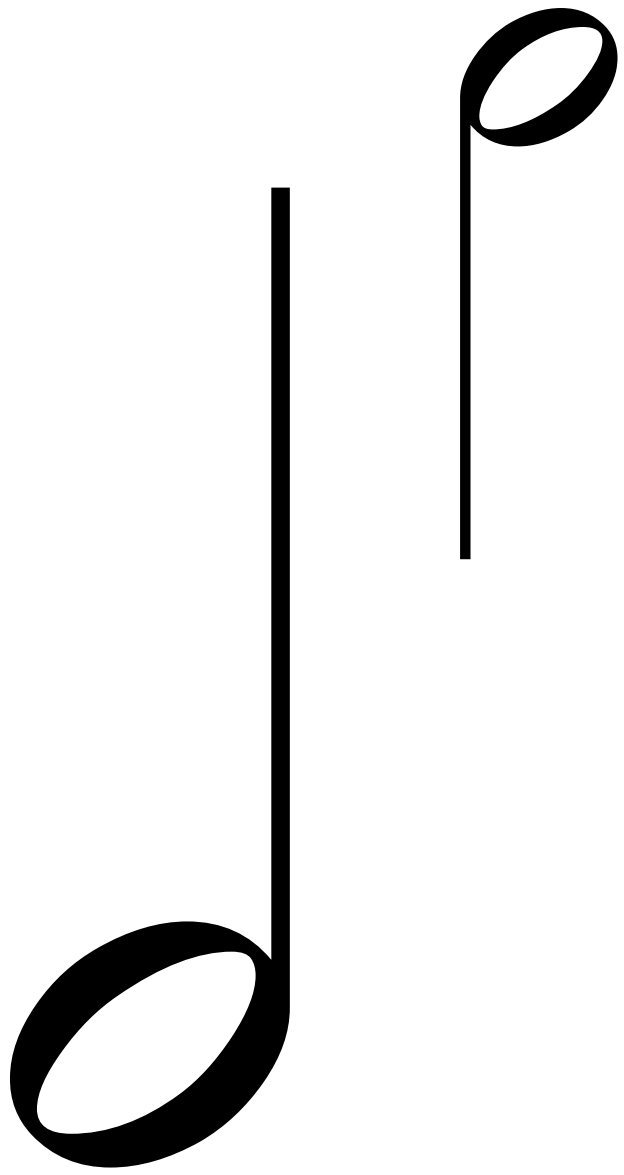
except when I am upside down. And, I

can be upside down some of the time, but most of the time you will probably see me

with my notehood at the bottom.

That long line is called a "stem". Just think

of a flower and you will remember the name.



I am a Half Note. I have a notehhead and a stem. My notehhead has a space that is not colored in the middle though. I have an empty notehhead!



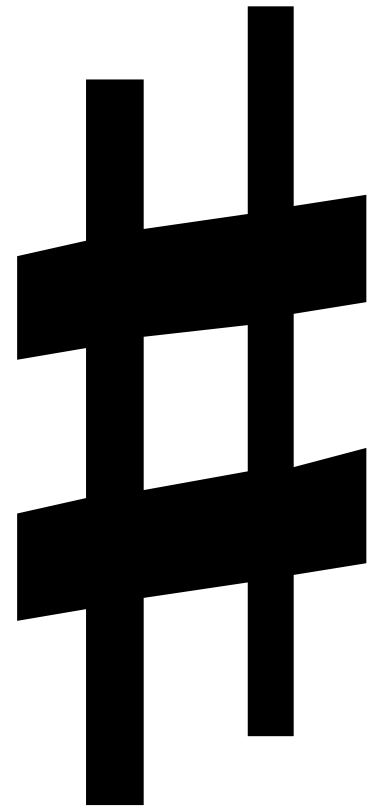
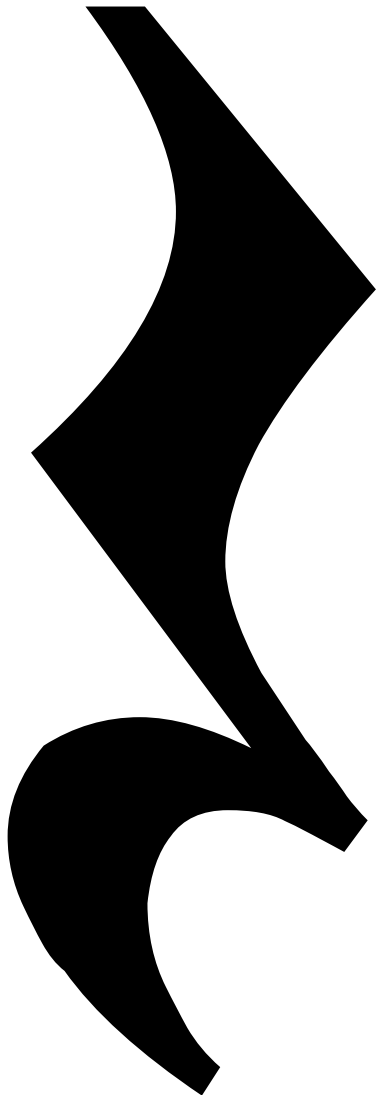
When you see me you walk slowly....

waaaallllk, waaaallllk... through the sounds. Walking slowly is called strolling, so when you see me you strooooll, strooooll, strooooll.....

I am a Whole Note. I am the only note that has only a notehhead. I don't have a stem.



When you see me you take a step, then stop for a little bit before taking the next step. When you see me you REALLY go slowly! Step, stop, step, stop, step, stop through the sounds.



I am a Quarter Rest.
When you see
me you "Shhh".
You don't make a
sound.

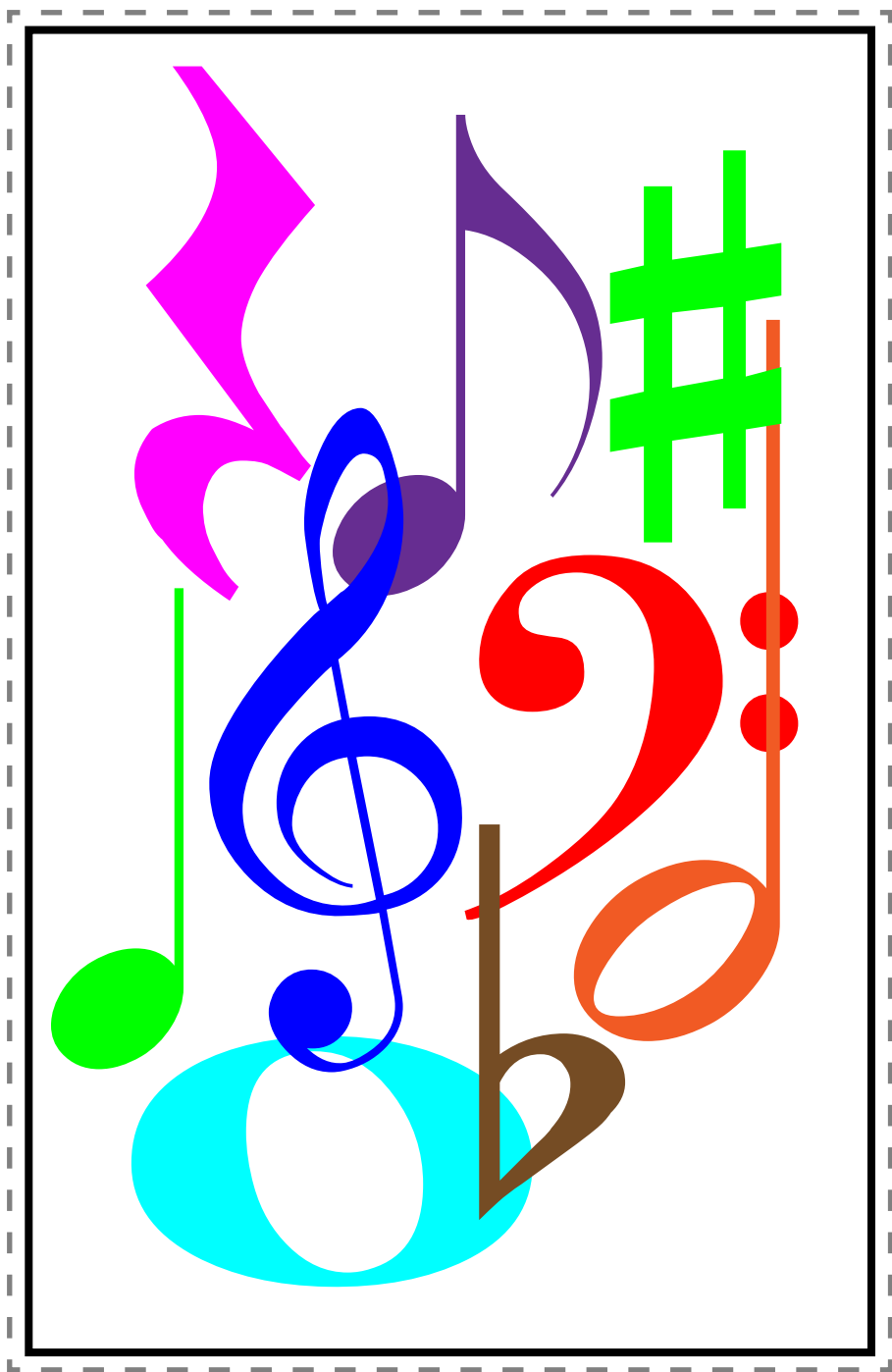


I am called a Sharp. When you see
me you move to the right
ONE key on a
piano, or if you are
singing you move your
voice up just a little bit.



I kind of look like a ladder so you can
remember to go up in your sound.
Remember, "up" on a piano keyboard means
to go to the right.

b



To help you remember, I am pointing
down. And as a reminder, "down" on
the piano means going toward the left.

I am called a Flat. When you see me
in music you go down one key if you
are playing the piano, or make
your voice go down just a little
bit if you are singing.

I'm just a cover to help
you remember all the
different music shapes!